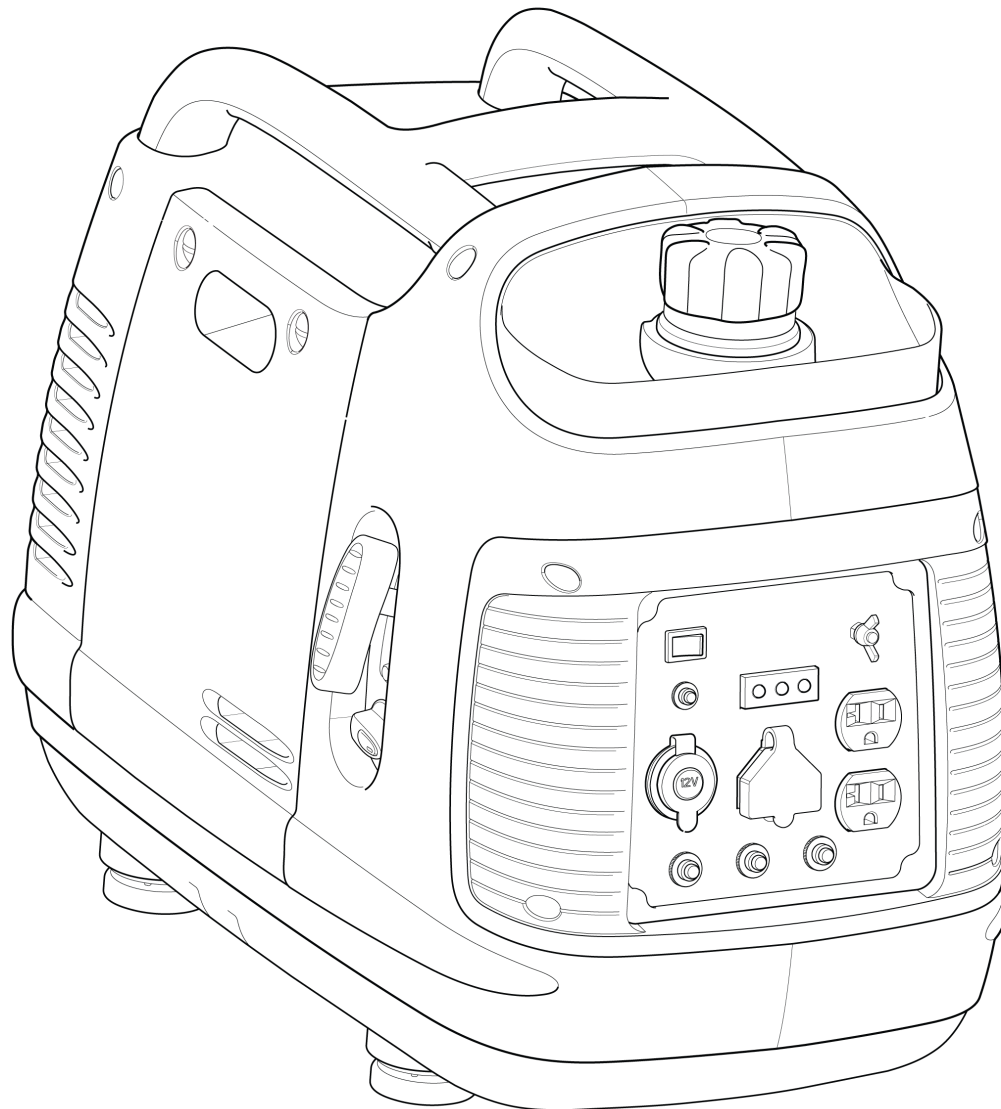




# Parts Manual

Mfg. No: 030651-00  
1,700 Watt Briggs & Stratton Inverter  
Generator





---

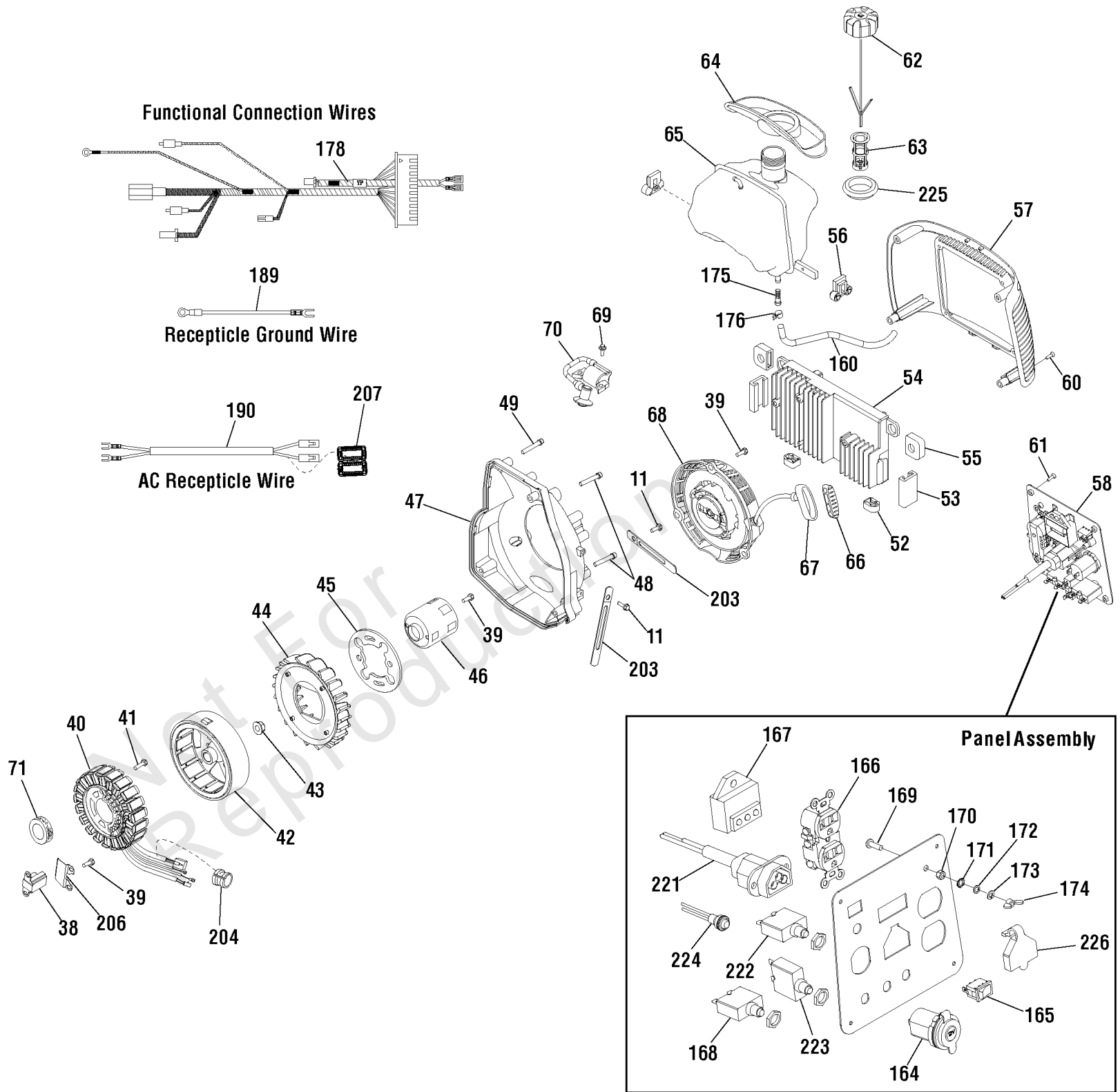
| <b>Model Components</b>                      | <b>Page</b> |
|--|-------------|
| Alternator & Control Panel (80015609p1)..... | 4           |
| Engine (80015609p2).....                     | 8           |
| Main Unit (80015609p3).....                  | 12          |
| Wiring Diagram (80014393WDb).....            | 16          |
| Wiring Schematic (80014393WS).....           | 18          |
| Torque Specification Chart.....              | 20          |

Not For  
Reproduction

# Alternator & Control Panel (80015609p1)

Note: Unless noted otherwise, use the standard torque specifications

Mfg. No: 030651-00



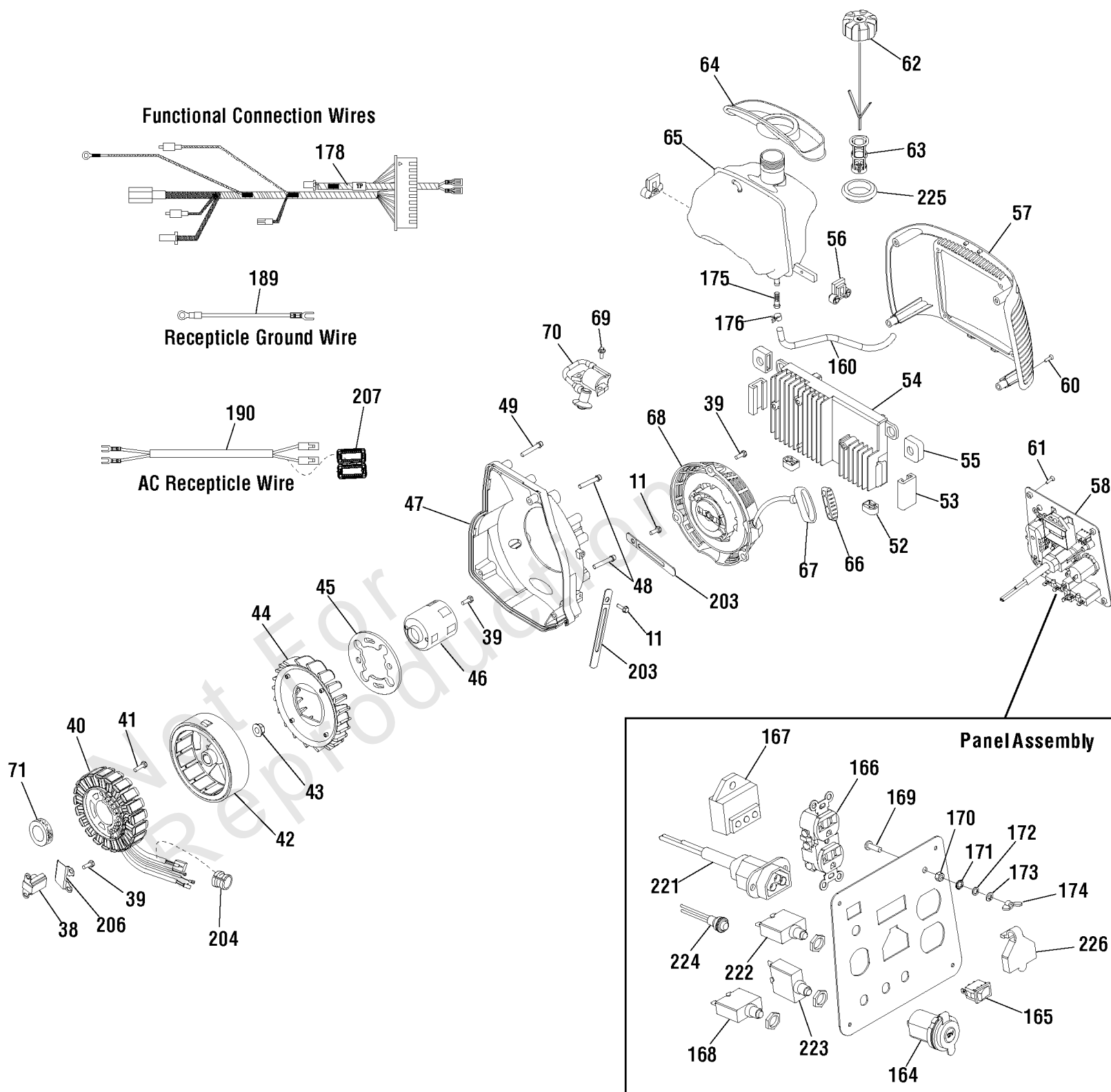
## Alternator & Control Panel (80015609p1)

| REF NO | PART NO  | QTY | DESCRIPTION                             |
|--------|----------|-----|---|
| 11     | -----    |     | BOLT                                    |
| 38     | 311399GS |     | TRIGGER, Ignition                       |
| 39     | 311400GS |     | SCREW                                   |
| 40     | 707590   |     | STATOR                                  |
| 41     | 311402GS |     | SCREW                                   |
| 42     | 707591   |     | ROTOR                                   |
| 43     | 311404GS |     | NUT                                     |
| 44     | 314701GS |     | FAN                                     |
| 45     | -----    |     | TERMINAL                                |
| 46     | 311406GS |     | CUP, Flywheel                           |
| 47     | -----    |     | COVER-FAN                               |
| 48     | -----    |     | BOLT                                    |
| 49     | -----    |     | BOLT                                    |
| 52     | -----    |     | MOUNT-VIBRATION                         |
| 53     | -----    |     | MOUNT-VIBRATION                         |
| 54     | 707592   |     | INVERTER                                |
| 55     | -----    |     | MOUNT-VIBRATION                         |
| 56     | -----    |     | MOUNT-VIBRATION                         |
| 57     | 314529GS |     | COVER, Panel                            |
| 58     | 708077   |     | PANEL-CONTROL                           |
| 60     | -----    |     | SCREW                                   |
| 61     | -----    |     | SCREW                                   |
| 62     | 317134GS |     | CAP-FUEL                                |
| 63     | 317441GS |     | FILTER, Filler Neck                     |
| 64     | 707595   |     | PAD-FUEL TANK                           |
| 65     | 707596   |     | TANK-FUEL                               |
| 66     | 311414GS |     | INSERT, Grip                            |
| 67     | -----    |     | GRIP                                    |
| 68     | 706058   |     | ASSEMBLY, Starter Recoil, 2 KW Inverter |
| 69     | -----    |     | SCREW                                   |
| 70     | 317436GS |     | COIL, Ignition                          |
| 71     | -----    |     | SEAL-OIL                                |
| 160    | 707167   |     | HOSE-FUEL                               |
| 164    | 314531GS |     | OUTLET, 12VDC                           |
| 165    | 311442GS |     | SWITCH                                  |
| 166    | 68759GS  |     | OUTLET, 120V, 20Amp, Duplex             |
| 167    | 311443GS |     | LIGHT, Indicator                        |
| 168    | 311444GS |     | BREAKER, Circuit                        |
| 169    | 76040GS  |     | SCREW                                   |
| 170    | 207743GS |     | NUT                                     |
| 171    | 91719GS  |     | WASHER                                  |
| 172    | 207806GS |     | WASHER                                  |
| 173    | 207805GS |     | WASHER                                  |
| 174    | 187424GS |     | NUT, WING, M5 X 0.8                     |
| 175    | 707168   |     | FILTER-FUEL TANK                        |
| 176    | -----    |     | CLAMP                                   |
| 178    | 314533GS |     | HARNESS, Wiring                         |
| 189    | 315824GS |     | WIRE                                    |
| 190    | 315829GS |     | HARNESS, Wiring                         |
| 203    | 707319   |     | * BRACKET                               |
| 204    | -----    |     | COVER-RUBBER                            |

# Alternator & Control Panel (80015609p1)

Note: Unless noted otherwise, use the standard torque specifications

Mfg. No: 030651-00



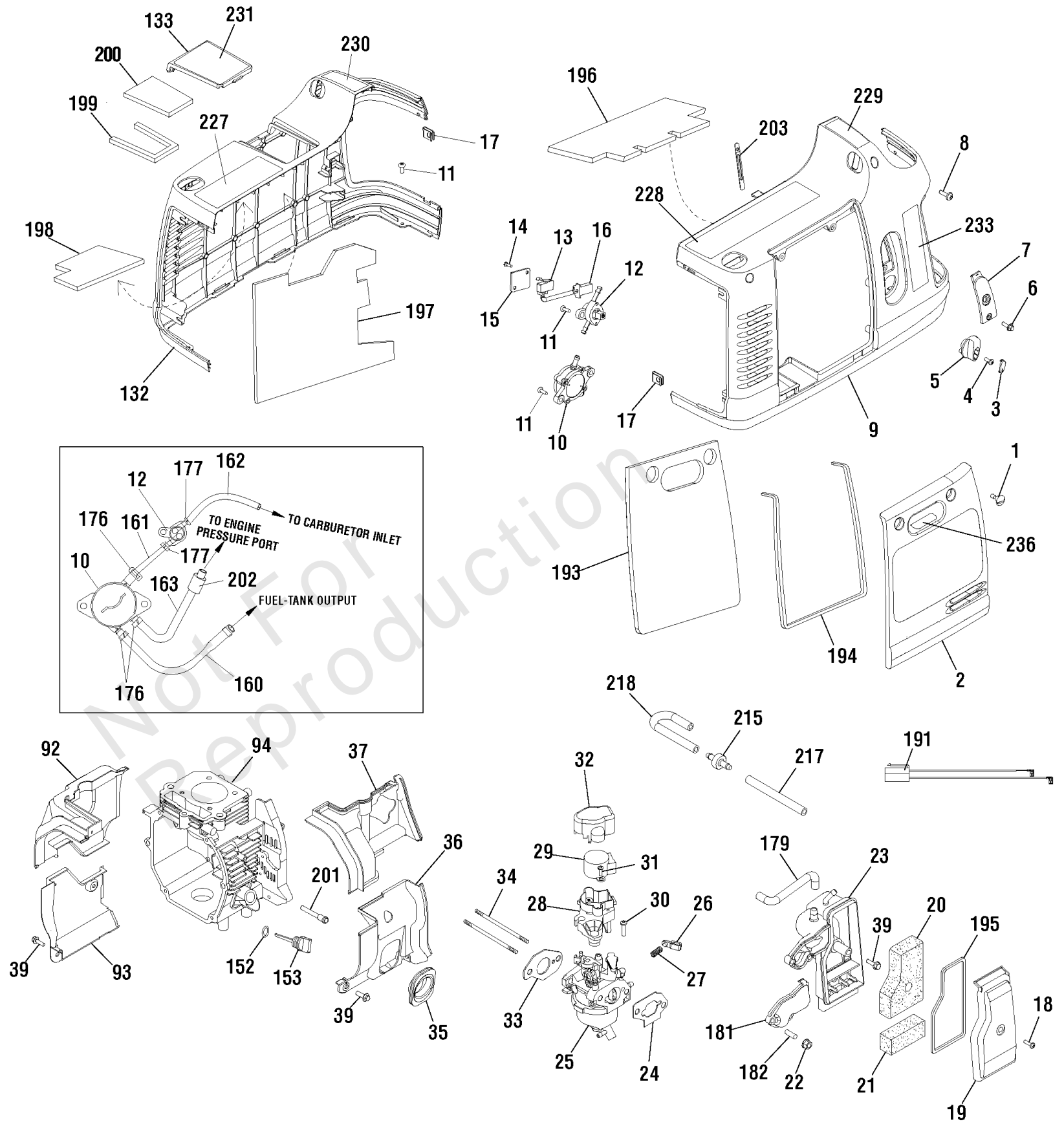
## Alternator & Control Panel (80015609p1)

| REF NO | PART NO  | QTY | DESCRIPTION  |
|--------|----------|-----|--|
| 206    | -----    |     | PROTECTOR BOARD  |
| 207    | 317445GS |     | BEAD, Ferrite  |
| 221    | 705488   |     | PORT-PARALLEL  |
| 222    | 707170   |     | CIRCUIT BREAKER, 15A   |
| 223    | 705931   |     | CIRCUIT BREAKER, 20A   |
| 224    | 319463GS |     | BUTTON-SELECT  |
| 225    | 705490   |     | GROMMET-FUEL   |
| 226    | 705478   |     | COVER-PORT   |
| --     | 187876GS |     | CABLE, BATTERY CHARGE<br>-(Not Illustrated)                                |
| --     | 100005   |     | OIL-4 CYCLE 30W 18OZ.<br>-(Not Illustrated)                                |
|        | 707850   |     | ADAPTER-USB<br>-(Not Illustrated)  |
| --     | 706357   |     | FUNNEL<br>-(Not Illustrated)   |
| --     | 703574   |     | KIT, Tool<br>-(Not Illustrated)  |
| --     | 311559GS |     | JET, Main, High Altitude, 5000 ft.<br>-(Optional Accessory - Not Included) |

# Engine (80015609p2)

Note: Unless noted otherwise, use the standard torque specifications

Mfg. No: 030651-00





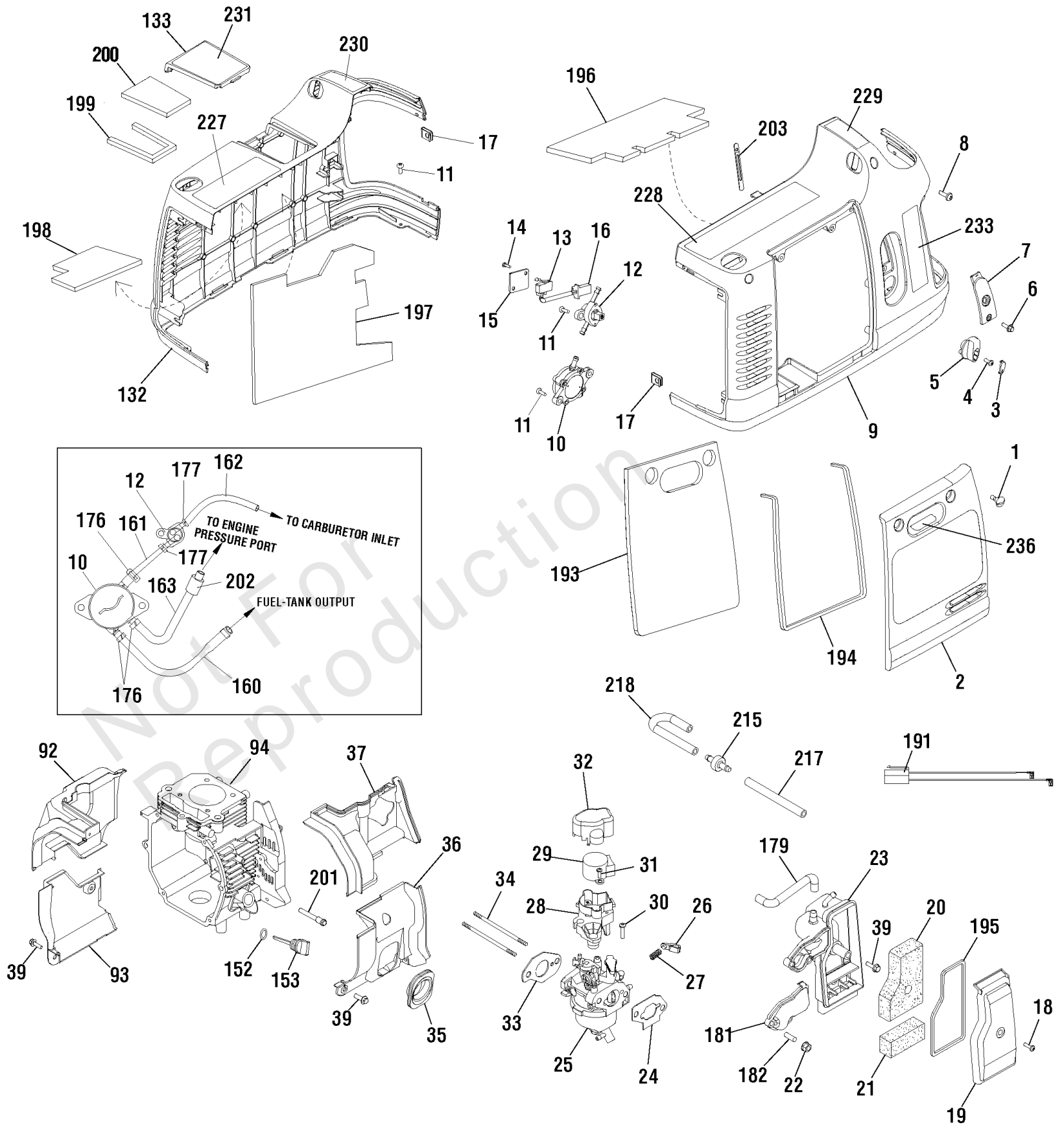
## Engine (80015609p2)

| REF NO | PART NO  | QTY | DESCRIPTION  |
|--------|----------|-----|--|
| 1      | 311375GS |     | BOLT   |
| 2      | 315939GS |     | PANEL-ACCESS<br>-(Includes Ref. Nos. 193, 194 & 236)     |
| 3      | 311377GS |     | COVER-KNOB   |
| 4      | -----    |     | BOLT   |
| 5      | 707587   |     | KNOB   |
| 6      | 311379GS |     | SCREW  |
| 7      | 311380GS |     | PLATE-TRIM   |
| 8      | 311381GS |     | BOLT   |
| 9      | 317877GS |     | COVER-SIDE<br>-(Includes Ref. Nos. 196, 228, 229 & 233)  |
| 10     | 706057   |     | PUMP-FUEL  |
| 11     | -----    |     | SCREW  |
| 12     | 311384GS |     | VALVE-FUEL   |
| 13     | 311385GS |     | SWITCH-ON/OFF  |
| 14     | -----    |     | BOLT   |
| 15     | -----    |     | COVER-SWITCH   |
| 16     | -----    |     | CONNECTION   |
| 17     | -----    |     | NUT  |
| 18     | 311386GS |     | BOLT   |
| 19     | 311387GS |     | COVER-AIR CLEANER<br>-(Includes Ref. No. 195)            |
| 20     | 311388GS |     | FILTER-A/C FOAM  |
| 21     | 311389GS |     | FILTER-A/C FOAM  |
| 22     | -----    |     | NUT  |
| 23     | 317437GS |     | BASE-AIR CLEANER   |
| 24     | 311391GS |     | GASKET-AIR CLEANER                                       |
| 25     | 311392GS |     | CARBURETOR   |
| 26     | 311393GS |     | ROD-THROTTLE   |
| 27     | -----    |     | SPRING   |
| 28     | 311394GS |     | BRACKET  |
| 29     | 311395GS |     | MOTOR-STEPPER  |
| 30     | -----    |     | BOLT   |
| 31     | -----    |     | BOLT   |
| 32     | 311396GS |     | COVER  |
| 33     | 311397GS |     | GASKET   |
| 34     | 311398GS |     | STUD   |
| 35     | -----    |     | SEAL-RUBBER  |
| 36     | -----    |     | DEFLECTOR  |
| 37     | -----    |     | DEFLECTOR  |
| 39     | 311400GS |     | SCREW  |
| 92     | -----    |     | DEFLECTOR  |
| 93     | -----    |     | DEFLECTOR  |
| 94     | -----    |     | CRANKCASE  |
| 132    | 311429GS |     | COVER-SIDE<br>-(Includes Ref. Nos. 197, 198 & 227)       |
| 133    | 311430GS |     | COVER-SPARK PLUG<br>-(Includes Ref. Nos. 199, 200 & 231) |
| 152    | 705492   |     | OIL SEAL   |
| 153    | 311434GS |     | DIPSTICK   |
| 160    | 707167   |     | HOSE-FUEL  |
| 161    | 317444GS |     | HOSE-FUEL  |
| 162    | 317752GS |     | HOSE-FUEL  |

# Engine (80015609p2)

Note: Unless noted otherwise, use the standard torque specifications

Mfg. No: 030651-00



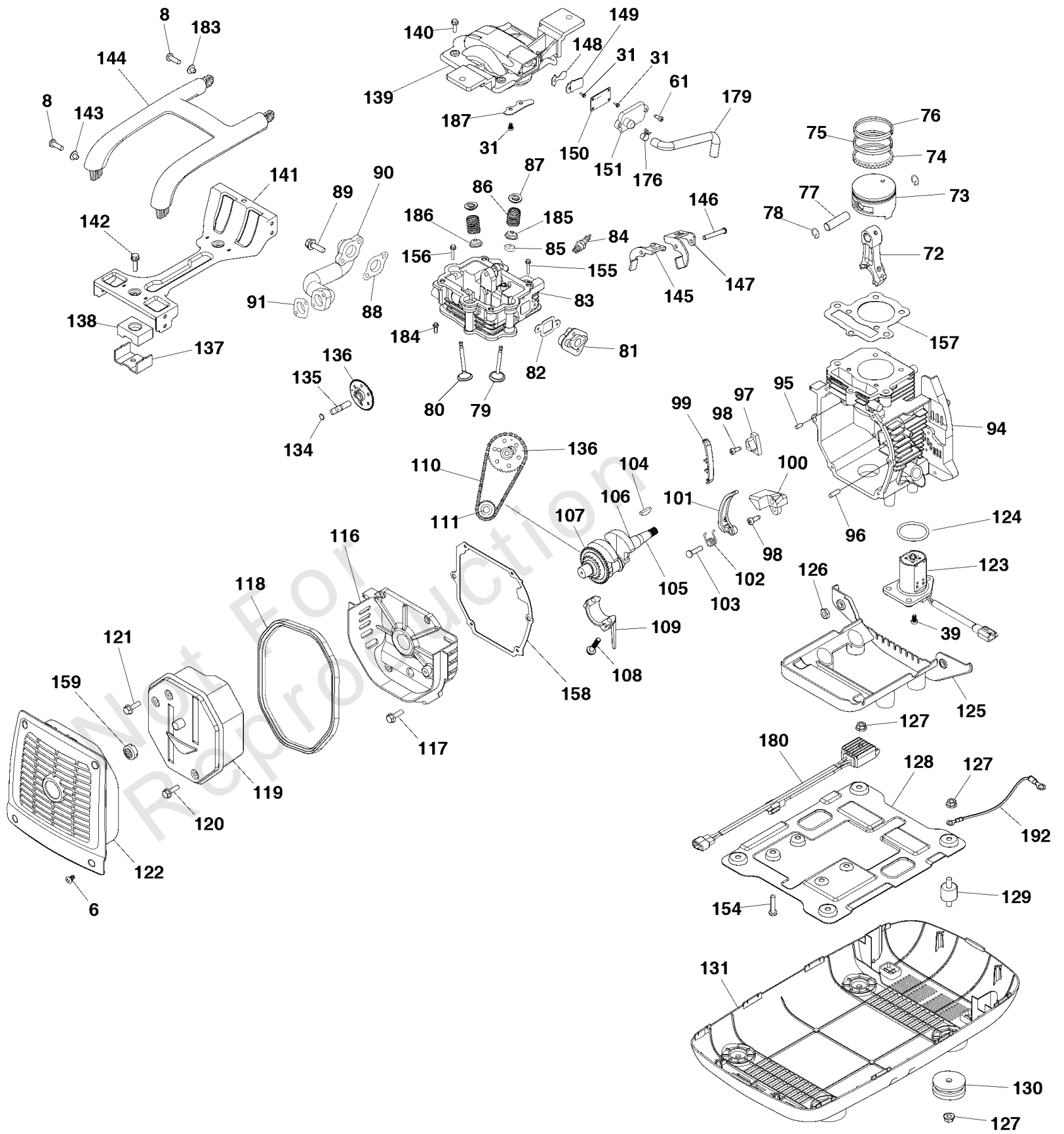
## Engine (80015609p2)

| REF NO | PART NO  | QTY | DESCRIPTION             |
|--------|----------|-----|-------------------------|
| 163    | 311440GS |     | HOSE-VACUUM             |
| 176    | -----    |     | CLAMP                   |
| 177    | -----    |     | CLAMP                   |
| 179    | 311446GS |     | HOSE                    |
| 181    | 312861GS |     | COVER-AIR CLEANER       |
| 182    | -----    |     | SLEEVE                  |
| 191    | 314479GS |     | WIRE                    |
| 193    | -----    |     | FOAM                    |
| 194    | -----    |     | SEAL                    |
| 195    | -----    |     | SEAL                    |
| 196    | -----    |     | FOAM                    |
| 197    | -----    |     | FOAM                    |
| 198    | -----    |     | FOAM                    |
| 199    | -----    |     | SEAL                    |
| 200    | -----    |     | FOAM                    |
| 201    | -----    |     | CYLINDER-BREATHING TUBE |
| 202    | -----    |     | TUBE                    |
| 203    | -----    |     | BRACKET                 |
| 215    | 317108GS |     | CHECK VALVE             |
| 217    | 317446GS |     | HOSE                    |
| 218    | 317447GS |     | HOSE                    |
| 227    | 707633   |     | DECAL                   |
| 228    | 707634   |     | DECAL                   |
| 229    | 707602   |     | DECAL                   |
| 230    | 707635   |     | DECAL                   |
| 231    | 707604   |     | DECAL                   |
| 233    | 707605   |     | DECAL                   |
| 236    | 705967   |     | DECAL                   |

# Main Unit (80015609p3)

Note: Unless noted otherwise, use the standard torque specifications

Mfg. No: 030651-00



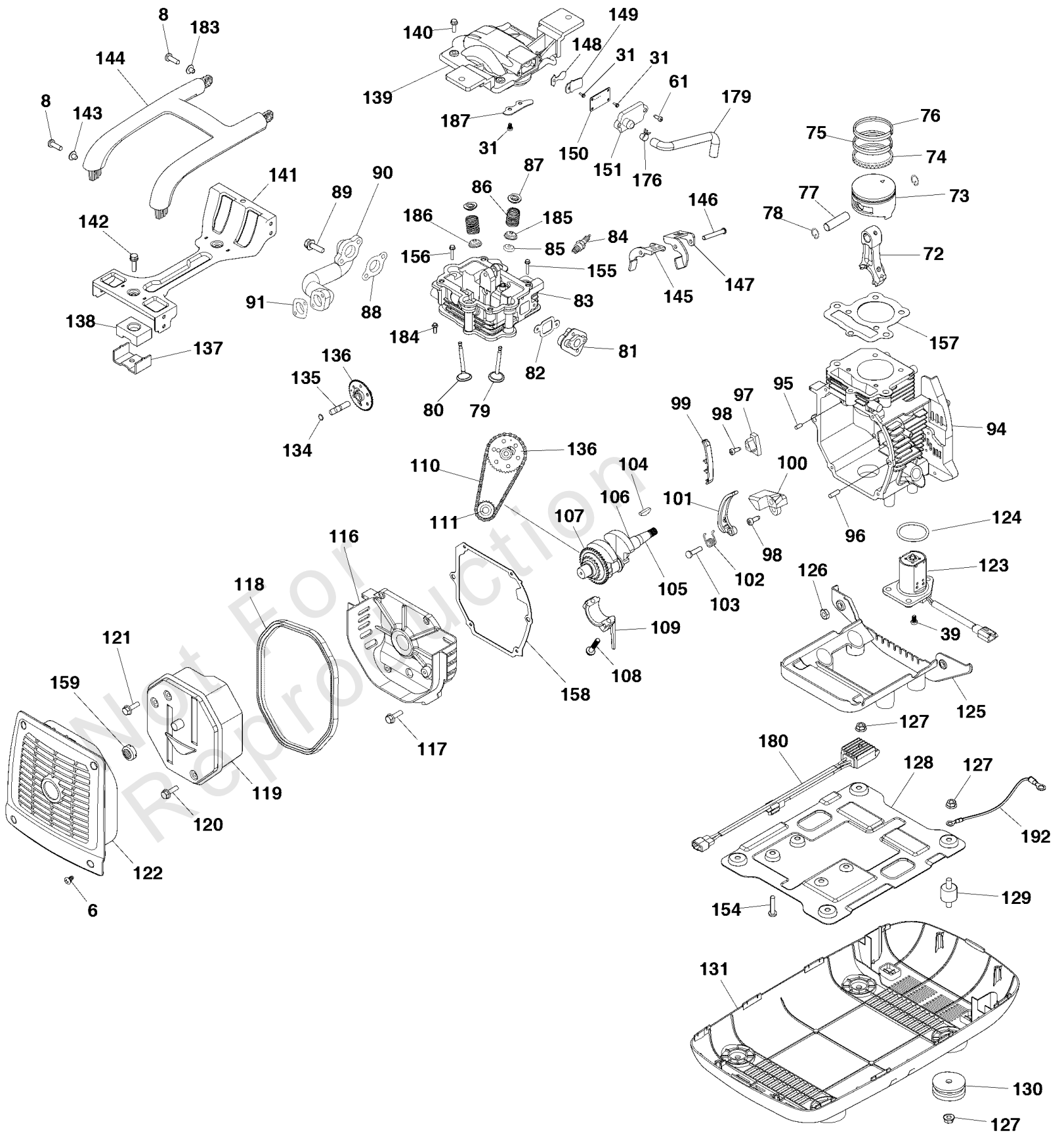
## Main Unit (80015609p3)

| REF NO | PART NO  | QTY | DESCRIPTION     |
|--------|----------|-----|-----------------|
| 6      | 311379GS |     | SCREW           |
| 8      | 311381GS |     | BOLT            |
| 31     | -----    |     | BOLT            |
| 39     | 311400GS |     | SCREW           |
| 61     | -----    |     | SCREW           |
| 72     | -----    |     | ROD             |
| 73     | -----    |     | PISTON          |
| 74     | -----    |     | RING            |
| 75     | -----    |     | RING            |
| 76     | -----    |     | RING            |
| 77     | -----    |     | PIN             |
| 78     | -----    |     | RETAINER-PIN    |
| 79     | -----    |     | VALVE-INTAKE    |
| 80     | -----    |     | VALVE-EXHAUST   |
| 81     | 311417GS |     | INSULATOR       |
| 82     | 311418GS |     | GASKET, Intake  |
| 83     | -----    |     | CYLINDER HEAD   |
| 84     | 311419GS |     | SPARK PLUG      |
| 85     | -----    |     | SEAL-VALVE OIL  |
| 86     | -----    |     | SPRING          |
| 87     | -----    |     | SEAT-VALVE      |
| 88     | 311420GS |     | GASKET          |
| 89     | -----    |     | BOLT            |
| 90     | -----    |     | MUFFLER         |
| 91     | 311421GS |     | GASKET, Exhaust |
| 94     | -----    |     | CRANKCASE       |
| 95     | -----    |     | PIN             |
| 96     | -----    |     | PIN             |
| 97     | -----    |     | BLOCK           |
| 98     | -----    |     | SCREW           |
| 99     | -----    |     | BRACKET         |
| 100    | -----    |     | BRACKET         |
| 101    | -----    |     | ARM-TENSION     |
| 102    | -----    |     | SPRING          |
| 103    | -----    |     | PIN             |
| 104    | -----    |     | KEY             |
| 105    | -----    |     | CRANKSHAFT      |
| 106    | -----    |     | BEARING         |
| 107    | -----    |     | GEAR            |
| 108    | -----    |     | BOLT            |
| 109    | -----    |     | COVER           |
| 110    | -----    |     | CHAIN           |
| 111    | -----    |     | WHEEL-CHAIN     |
| 116    | -----    |     | COVER-CRANKCASE |
| 117    | -----    |     | BOLT            |
| 118    | -----    |     | BLOCK-RUBBER    |
| 119    | -----    |     | MUFFLER         |
| 120    | -----    |     | BOLT            |
| 121    | -----    |     | BOLT            |
| 122    | 704069   |     | GUARD-MUFFLER   |
| 123    | 311423GS |     | SENSOR, Oil     |

# Main Unit (80015609p3)

Note: Unless noted otherwise, use the standard torque specifications

Mfg. No: 030651-00



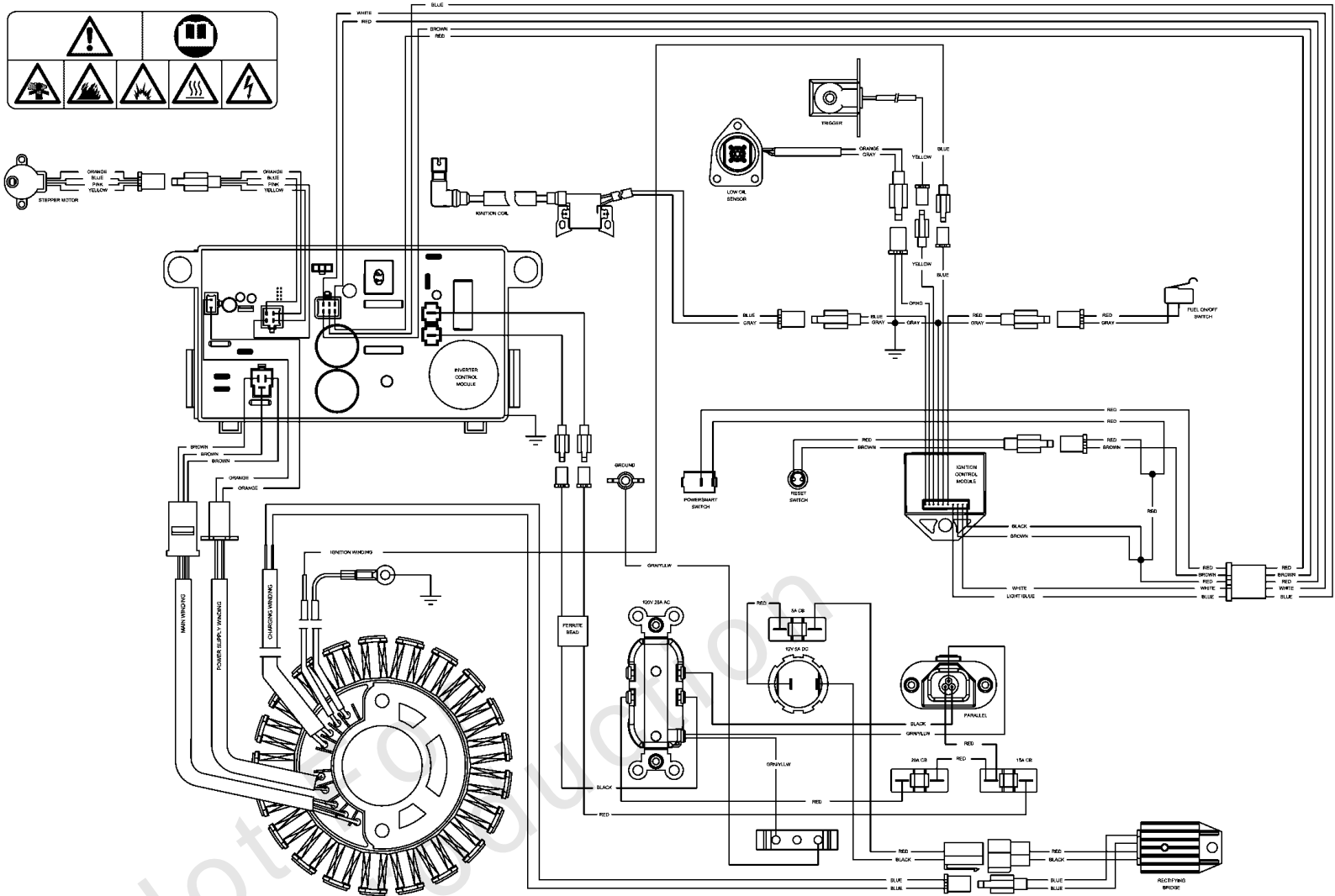
## Main Unit (80015609p3)

| REF NO | PART NO  | QTY | DESCRIPTION         |
|--------|----------|-----|---------------------|
| 124    | 314482GS |     | O-RING, 33.5 x 2.65 |
| 125    | -----    |     | COVER               |
| 126    | -----    |     | NUT                 |
| 127    | 707919   |     | NUT                 |
| 128    | 311425GS |     | BASE                |
| 129    | 311426GS |     | MOUNT, Vibration    |
| 130    | 311427GS |     | MOUNT, Vibration    |
| 131    | 311428GS |     | COVER               |
| 134    | -----    |     | O-RING              |
| 135    | -----    |     | SHAFT               |
| 136    | -----    |     | CAM-ASSEMBLY        |
| 137    | -----    |     | BRACKET             |
| 138    | -----    |     | MOUNT-VIBRATION     |
| 139    | 314786GS |     | COVER, Cylinder     |
| 140    | -----    |     | BOLT                |
| 141    | -----    |     | BRACKET             |
| 142    | -----    |     | BOLT                |
| 143    | 311431GS |     | BUSHING             |
| 144    | 311432GS |     | HANDLE              |
| 145    | -----    |     | ARM-EXHAUST VALVE   |
| 146    | -----    |     | PIN                 |
| 147    | -----    |     | ARM-INTAKE VALVE    |
| 148    | 314747GS |     | VALVE               |
| 149    | 314748GS |     | BOARD, Valve        |
| 150    | -----    |     | BOARD-VALVE         |
| 151    | -----    |     | BOARD-VALVE         |
| 154    | -----    |     | BOLT                |
| 155    | -----    |     | BOLT                |
| 156    | -----    |     | BOLT                |
| 157    | -----    |     | GASKET              |
| 158    | 311435GS |     | GASKET, Crankcase   |
| 159    | 315584GS |     | ARRESTOR, Spark     |
| 176    | -----    |     | CLAMP               |
| 179    | 311446GS |     | TUBE, Breather      |
| 180    | 311407GS |     | REGULATOR, Voltage  |
| 183    | 314478GS |     | BUSHING             |
| 184    | -----    |     | BOLT                |
| 185    | -----    |     | SEAT                |
| 186    | -----    |     | SEAT                |
| 187    | -----    |     | PLATE               |
| 192    | 314483GS |     | WIRE, Ground        |

# Wiring Diagram (80014393WDb)

Note: Unless noted otherwise, use the standard torque specifications

Mfg. No: 030651-00





## Wiring Diagram (80014393WDb)

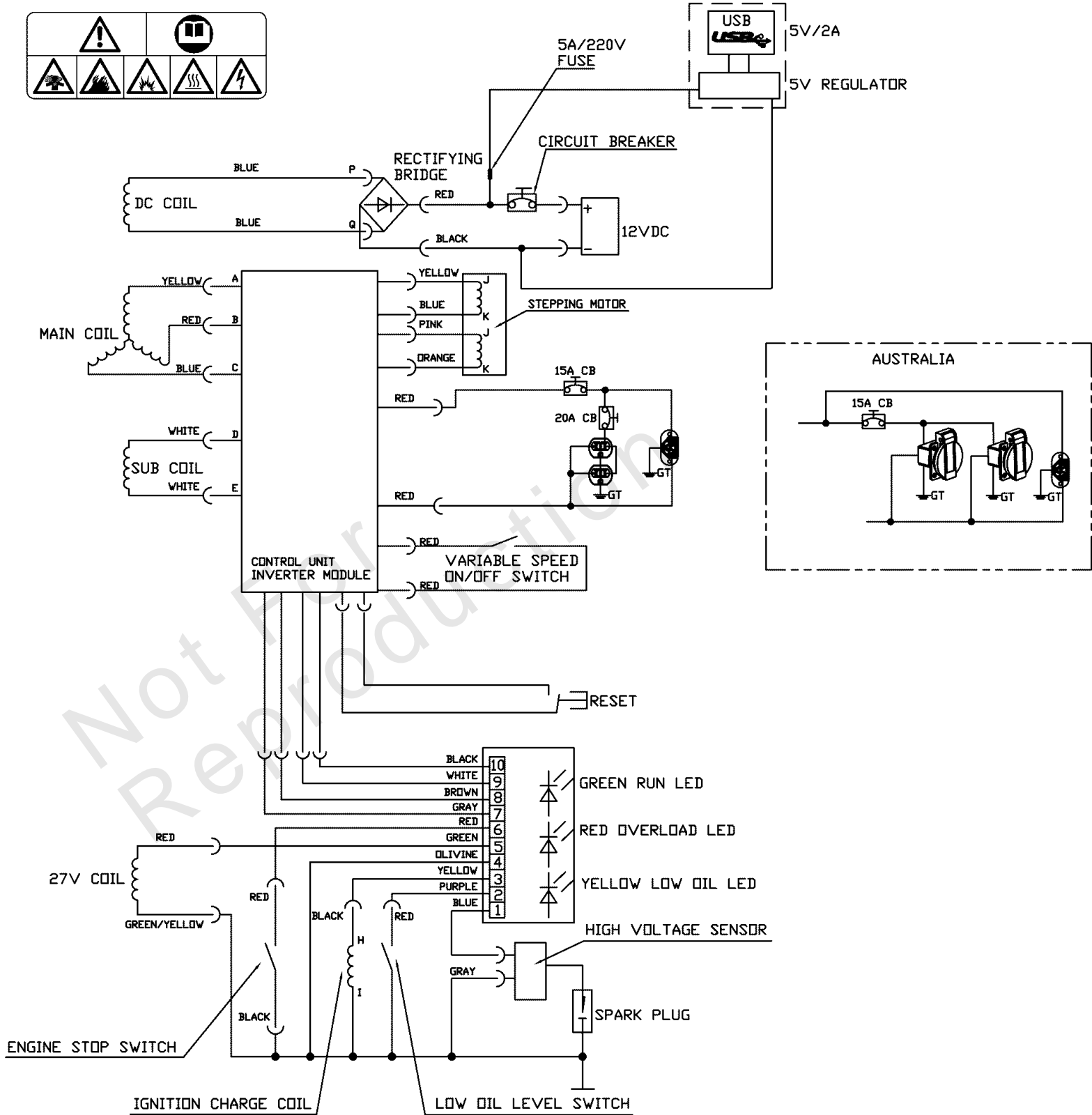
| REF NO | PART NO | QTY | DESCRIPTION   |
|--------|---------|-----|---|
| --     | -----   |     | Wiring Diagram Only   |
|        | -----   |     | WARNING - Generator Voltage Could Cause Electrical Shock or Burn Resulting in Death Or Serious Injury. To Avoid Electrical Shock Or Burn Hazard, Please Refer Service To Qualified Personnel. |

Not For Reproduction

# Wiring Schematic (80014393WS)

Note: Unless noted otherwise, use the standard torque specifications

Mfg. No: 030651-00



## Wiring Schematic (80014393WS)

| REF NO | PART NO | QTY | DESCRIPTION   |
|--------|---------|-----|---|
| --     | -----   |     | Wiring Diagram Only   |
|        | -----   |     | WARNING - Generator Voltage Could Cause Electrical Shock or Burn Resulting in Death Or Serious Injury. To Avoid Electrical Shock Or Burn Hazard, Please Refer Service To Qualified Personnel. |

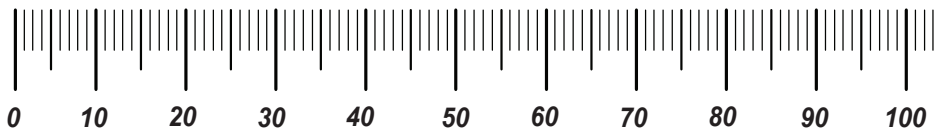
Not For Reproduction

# Hardware Identification & Torque Specifications

| Torque Specification Chart                             |           |      |           |      |            |      |            |      |
|--|-----------|------|-----------|------|------------|------|------------|------|
| FOR STANDARD METRIC MACHINE HARDWARE (Tolerance ± 20%) |           |      |           |      |            |      |            |      |
| Property Class   | 5.6       |      | 8.8       |      | 10.9       |      | 12.9       |      |
|  | Class 5.6 |      | Class 8.8 |      | Class 10.9 |      | Class 12.9 |      |
| Size Of Hardware                                       | in/lbs    | Nm.  | in/lbs    | Nm.  | in/lbs     | Nm.  | in/lbs     | Nm.  |
|  | ft/lbs    |      | ft/lbs    |      | ft/lbs     |      | ft/lbs     |      |
| M3   | 5.88      | .56  | 13.44     | 1.28 | 19.2       | 1.80 | 22.92      | 2.15 |
| M4   | 13.44     | 1.28 | 30.72     | 2.90 | 43.44      | 4.10 | 52.56      | 4.95 |
| M5   | 26.4      | 2.50 | 60.96     | 5.75 | 5.97       | 8.10 | 7.15       | 9.7  |
| M6   | 44.64     | 4.3  | 7.3       | 9.9  | 10.3       | 14   | 12.1       | 16.5 |
| M7   | 5.2       | 7.1  | 12.1      | 16.5 | 16.9       | 23   | 19.9       | 27   |
| M8   | 7.7       | 10.5 | 17.7      | 24   | 25         | 34   | 29         | 40   |
| M10  | 15        | 21   | 35        | 48   | 50         | 67   | 59         | 81   |
| M12  | 26        | 36   | 61        | 83   | 86.2       | 117  | 103        | 140  |
| M14  | 42        | 58   | 101       | 132  | 136        | 185  | 162        | 220  |
| M16  | 64        | 88   | 147       | 200  | 210        | 285  | 250        | 340  |
| M18  | 89        | 121  | 202       | 275  | 287        | 390  | 346        | 470  |
| M20  | 126       | 171  | 290       | 390  | 405        | 550  | 486        | 660  |
| M22  | 169       | 230  | 390       | 530  | 559        | 745  | 656        | 890  |
| M24  | 217       | 295  | 497       | 375  | 708        | 960  | 840        | 1140 |
| M27  | 320       | 435  | 733       | 995  | 1032       | 1400 | 1239       | 1680 |
| M30  | 435       | 590  | 995       | 1350 | 1401       | 1900 | 1681       | 2280 |
| M33  | 590       | 800  | 1349      | 1830 | 1902       | 2580 | 2278       | 3090 |
| M36  | 759       | 1030 | 1740      | 2360 | 2441       | 3310 | 2935       | 3980 |
| M39  | 988       | 1340 | 2249      | 3050 | 3163       | 4290 | 3798       | 5150 |

| Torque Specification Chart                      |             |       |             |       |             |         |
|---|-------------|-------|-------------|-------|-------------|---------|
| FOR STANDARD MACHINE HARDWARE (Tolerance ± 20%) |             |       |             |       |             |         |
| Hardware Grade                                  | No Marks    |       | SAE Grade 5 |       | SAE Grade 8 |         |
|   | SAE Grade 2 |       | SAE Grade 5 |       | SAE Grade 8 |         |
| Size Of Hardware                                | in/lbs      | Nm.   | in/lbs      | Nm.   | in/lbs      | Nm.     |
|   | ft/lbs      |       | ft/lbs      |       | ft/lbs      |         |
| 8-32  | 19          | 2.1   | 30          | 3.4   | 41          | 4.6     |
| 8-36  | 20          | 2.3   | 31          | 3.5   | 43          | 4.9     |
| 10-24   | 27          | 3.1   | 43          | 4.9   | 60          | 6.8     |
| 10-32   | 31          | 3.5   | 49          | 5.5   | 68          | 7.7     |
| 1/4-20  | 66          | 7.6   | 8           | 10.9  | 12          | 16.3    |
| 1/4-28  | 76          | 8.6   | 10          | 13.6  | 14          | 19.0    |
| 5/16-18   | 11          | 15.0  | 17          | 23.1  | 25          | 34.0    |
| 5/16-24   | 12          | 16.3  | 19          | 25.8  | 29          | 34.0    |
| 3/8-16  | 20          | 27.2  | 30          | 40.8  | 45          | 61.2    |
| 3/8-24  | 23          | 31.3  | 35          | 47.6  | 50          | 68.0    |
| 7/16-14   | 30          | 40.8  | 50          | 68.0  | 70          | 95.2    |
| 7/16-20   | 35          | 47.6  | 55          | 74.8  | 80          | 108.8   |
| 1/2-13  | 50          | 68.0  | 75          | 102.0 | 110         | 149.6   |
| 1/2-20  | 55          | 74.8  | 90          | 122.4 | 120         | 163.2   |
| 9/16-12   | 65          | 88.4  | 110         | 149.6 | 150         | 204.0   |
| 9/16-18   | 75          | 102.0 | 120         | 163.2 | 170         | 231.2   |
| 5/8-11  | 90          | 122.4 | 150         | 204.0 | 220         | 299.2   |
| 5/8-18  | 100         | 136   | 180         | 244.8 | 240         | 326.4   |
| 3/4-10  | 160         | 217.6 | 260         | 353.6 | 386         | 525.0   |
| 3/4-16  | 180         | 244.8 | 300         | 408.0 | 420         | 571.2   |
| 7/8-9   | 140         | 190.4 | 400         | 544.0 | 600         | 816.0   |
| 7/8-14  | 155         | 210.8 | 440         | 598.4 | 660         | 897.6   |
| 1-8   | 220         | 299.2 | 580         | 788.8 | 900         | 1,244.0 |
| 1-12  | 240         | 326.4 | 640         | 870.4 | 1,000       | 1,360.0 |

The guides and ruler furnished below are designed to help you select the appropriate hardware.



Nut, M8

Thread Diameter (mm)

Inside Diameter (in)      Threads per inch

Nut, 1/2-16

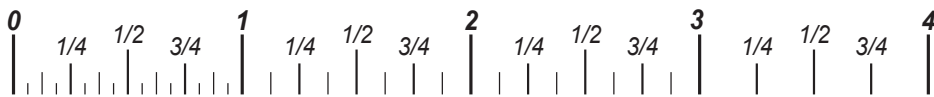


Screw, M8- 1.25 x 25

Thread Diameter (mm)      Distance between threads (mm)      Body Length (mm)

Body Diameter      Threads per inch      Body Length (in)

Screw, 1/2- 16 x 2



## Standard Hardware Sizing

When a washer or nut is identified as 1/2" (M8), this is the *Nominal size*, meaning the *inside diameter* is 1/2 inch (8mm metric thread diameter); if a second number is present it represents the *threads per inch* (distance between threads).

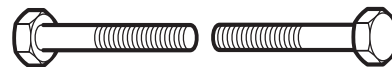
When bolt or capscrew is identified as 1/2 - 16 x 2" (M8 - 1.25 x 50), this means the *Nominal size*, or body diameter is 1/2 inch (8mm metric thread diameter), the second number, 16, represents the *threads per inch*, (*distance between threads*). The final number is the body length of the bolt or screw, 2 inches (50mm).

## NOTES

- These torque values are to be used for all hardware excluding: locknuts, self-tapping screws, thread forming screws, sheet metal screws and socket head setscrews.
- Recommended seating torque values for locknuts:
  - for prevailing torque locknuts - use 65% of grade 5 torques.
  - for flange whizlock nuts and screws - use 135% of grade 5 torques.
- Unless otherwise noted on assembly drawings, all torque values must meet this specification.

## Common Hardware Types

Hex Head Capscrew



Washer



Carriage Bolt



Hex Nut

## Wrench & Fastener Size Guide

|                                  |                                  |                                  |  |                                 |
|----------------------------------|----------------------------------|----------------------------------|--|---------------------------------|
|                                  |                                  |                                  |  |                                 |
| 1/4" Bolt or Nut<br>Wrench—7/16" | 5/16" Bolt or Nut<br>Wrench—1/2" | 3/8" Bolt or Nut<br>Wrench—9/16" | 7/16" Bolt or Nut<br>Wrench (Bolt)—5/8"<br>Wrench (Nut)—11/16" | 1/2" Bolt or Nut<br>Wrench—3/4" |
| M6 Bolt or Nut<br>Wrench—10mm    | M8 Bolt or Nut<br>Wrench—13mm    | M10 Bolt or Nut<br>Wrench—17mm   | M12 Bolt or Nut<br>Wrench—19mm                                 | M14 Bolt or Nut<br>Wrench—22mm  |

